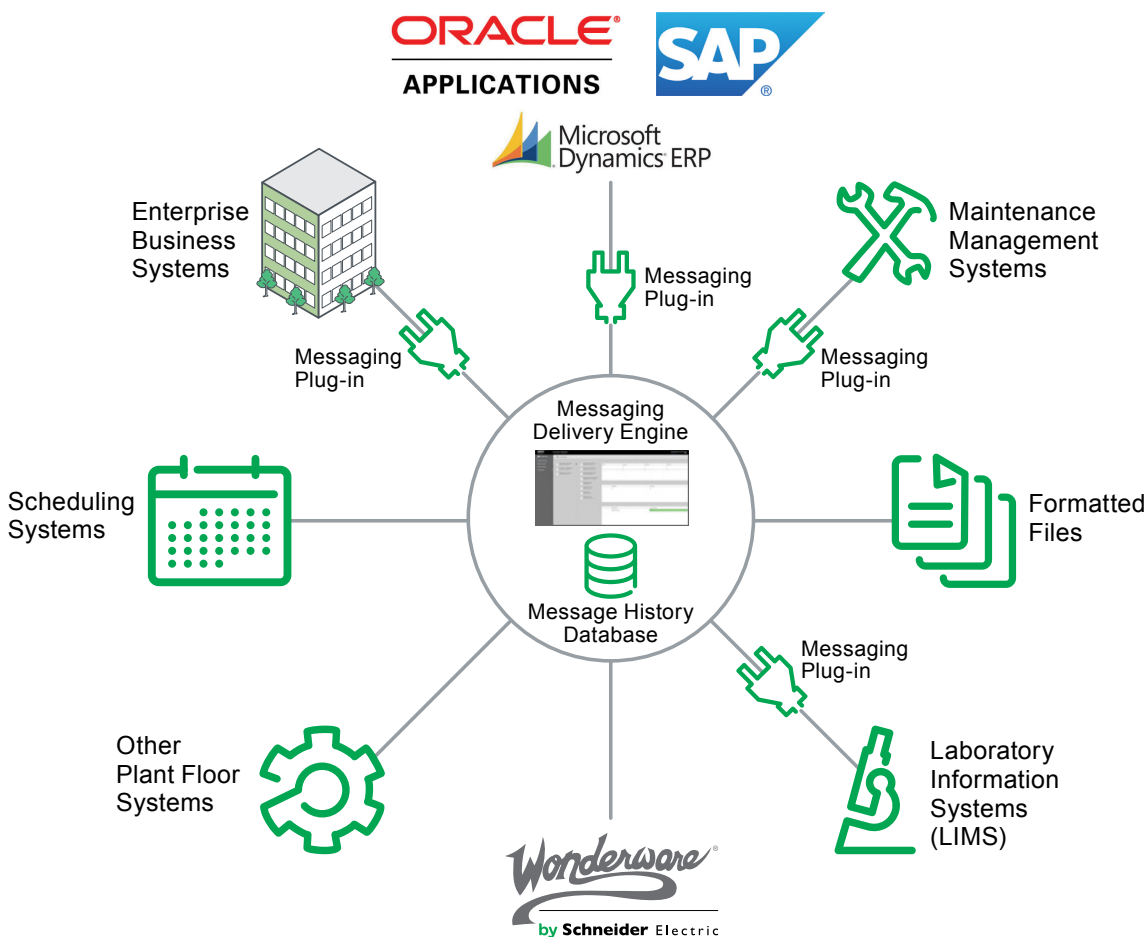


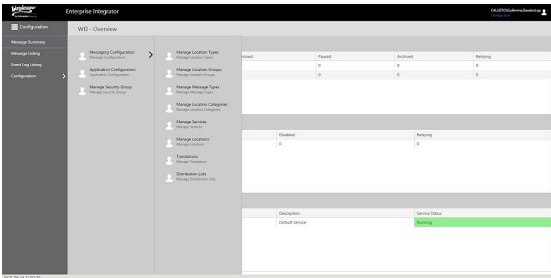
Wonderware Enterprise Integrator

Reliable plant to enterprise integration

The reliable integration of Manufacturing Execution Systems (MES) to Enterprise Resource Planning (ERP), Enterprise Quality Management System (EQMS), Enterprise Asset Management (EAM) or other plant and business applications has become mission critical for manufacturing plant operations. Wonderware Enterprise Integrator software offers a commercial off-the-shelf plant to enterprise integration software approach for reliable message exchange between multiple plant and enterprise applications and reducing the cost attached to Wonderware MES software integration. The software includes MES production event detection such as end of job or shift to trigger messages send to other applications which provide e.g. current production run results, material consumption and updated inventory status or product quality information. MES messages are configurable by mapping MES database table fields to the required message content structure. Such integration between MES, other plant and business enterprise systems offers supply chain visibility and decision making support with production response, event notification and status update information in near real time which leads to better planning decisions with more short term flexibility and increased business agility.



Wonderware Enterprise Integrator (WEI)



Connecting the Plant Floor with Business Systems

Wonderware Enterprise Integrator (WEI) is an integration application to provide data exchange and automatic data synchronization between two or more business/plant systems, offering a commercial off-the-shelf software approach to Plant to Enterprise integration via reliable message exchange.



SUMMARY

Wonderware Enterprise Integrator offers the benefits of a standard software approach to plant to enterprise integration and helps to maintain manufacturing business continuity in case of communication issues or loss of data.

BUSINESS VALUE

Manufacturing business continuity reduces unplanned plant downtime and maintains the revenue stream.

The software offers faster time to value, sustainability and lower total cost of ownership for single plant and multi-plant integration.

When used for multi-site plant integration standardization, it reduces multi-plant deployment efforts and further reduces the total cost of ownership by creating a dynamic link between the systems.

Securing Manufacturing Business Continuity

WEI software is designed to provide plant/business continuity in the case of enterprise application or wide area network (WAN) unavailability, using automatic message store and forward capabilities to enable business and manufacturing systems to work in a complementary fashion that is loosely coupled yet extremely reliable.

Integration Scenarios

Typical integration scenarios include connecting business systems with Wonderware Manufacturing Execution Systems (MES) software, but go beyond with support for industry-standard interfaces including XML messages, Files, Microsoft® Message Queue (MSMQ) and SQL queries.

With WEI, it is possible to connect any business system with Schneider Electric software and additional third party plant application on the shop floor. Wonderware Enterprise Integrator allows you to connect multiple applications, so one consistent approach for plant to enterprise integration is adopted, eliminating high maintenance point-to-point integrations and greatly reducing IT maintenance costs.

Wonderware Enterprise Integrator (WEI) Features

Reliable System-to-System and Plant-to-Enterprise Information Exchange

- **Mediates and guarantees** information exchange between systems
- **‘Store & Forward’** capability enabling fast recovery from system interruptions and securing business continuity
- Extensibility to **manage custom data transformation**, with data translation and system connectivity through custom code managed as reusable plug-ins

Support for Industrial Standards

- **Flexible message delivery** capabilities including XML messages, File Drop, Microsoft Message Queue (MSMQ) and SQL queries for data exchange
- Comprehensive **message history** for sophisticated error handling, leveraging Microsoft SQL Server™

Ease of Use for Configuration and Administration:

- **Web-based user interface** provides simplified user access for administration and configuration, as well as for system monitoring and manual operator intervention
- **Role-based security**; users and user groups can be associated with privileges required for any action a user or role might need to perform
- **Configurable mapping** of XML message, file or query data to MES database table parameters

Configuration		Manage Location Types				
Refresh	Add	LocationTypeId	Description	Send Receive Class	Location Count	
		Edit Delete	CODE	Messages processed or received by custom .NET code	WW.Messaging.WW.Messaging.DotNetClassSen...	0
		Edit Delete	DIRECT	Messages added directly to database through API call		0
		Edit Delete	DotNetObject	Messages Processed Or Received by a .NET DLL	WW.Messaging.WW.Messaging.DotNetObjectSe...	0
		Edit Delete	FOLDER	Messages received from, or sent to Network folders.	WW.Messaging.WW.Messaging.FolderSendRece...	8
		Edit Delete	MESJobEnd	Monitors jobs on MES entities and triggers a query or stored procedure to run when a job is ended	WW.Messaging.WW.Messaging.MESJobEnd	0
		Edit Delete	MESShiftEnd	Monitors shifts on MES entities and triggers a query or stored procedure to run when a shift is ended	WW.Messaging.WW.Messaging.MESShiftEnd	0
		Edit Delete	MESTable	Allows for reading data from an MES table or performing CRUD methods on an MES Table	WW.Messaging.WW.Messaging.MESTableSenR...	13
		Edit Delete	MSMQ	Messages received from, or sent to MSMQ queues	WW.Messaging.WW.Messaging.MSMQSendRece...	0
		Edit Delete	SQLQuery	Messages received from SQL	WW.Messaging.WW.Messaging.SQLQuery	4

Manage Location Types Manage Location Types
Manage Location Groups Manage Location Groups
Manage Message Types Manage Message Types
Manage Location Categories Manage Location Categories
Manage Services Manage Services
Manage Locations Manage Locations
Translations Manage Translations
Distribution Lists Manage Distribution Lists

Wonderware Enterprise Integrator (WEI) Specification Overview

Extensibility

Many enterprise integration projects require connections to specific interfaces or transforming messages between systems. Wonderware Enterprise Integrator provides the ability to extend its rich functionality through custom code in the form of reusable code plug-ins.

A plug-in is developed according to the needs of a specific integration scenario, decoupling Wonderware Enterprise Integrator's core functionality of message handling and delivery from necessary transformations that may vary depending on the Business System or Wonderware MES application configuration. Plug-ins can also be developed to provide default connectivity to business applications such as SAP, Microsoft Dynamics or Oracle. Once a plug-in is created, it can be easily reused with other installations of Wonderware Enterprise Integrator to support company standards within multi-site integration rollouts.

Operating Systems

WEI supports the Microsoft Windows Server platform, including:

- Windows Server 2008 Standard or Enterprise Edition (64-Bit)
- Windows Server 2008 R2 Standard or Enterprise Edition (64-Bit)
- Windows Server 2012 R2 Standard or Data Center Edition (64-Bit)

Database Technology

WEI software supports the following databases:

- Microsoft SQL Server 2008 in Standard or Enterprise Edition (32-Bit)
- Microsoft SQL Server 2012 in Standard or Enterprise Edition (32-Bit and 64-Bit)
- Microsoft SQL Server 2014 in Standard or Enterprise Edition (32-Bit and 64-Bit)

To Learn More

For more information on Wonderware Enterprise Integrator software, please contact your local Wonderware distributor, or visit www.software.schneider-electric.com/products/wonderware/manufacturing-operations-management/enterprise-integrator