



## ALPANA

Let your Data turn into Insights and put the power into your hands to take Data driven decisions. Alpana Platform provides real-time access to your data and lets users analyze complex informations through graphical representations that are easy to understand.

### Alpana Designer

Drag and drop widgets into the interface and manipulate your data right away. The desktop application allows you full autonomy. Once the Dashboard ready, share with your colleagues through Alpana Server and start to collaborate.

### Alpana Server

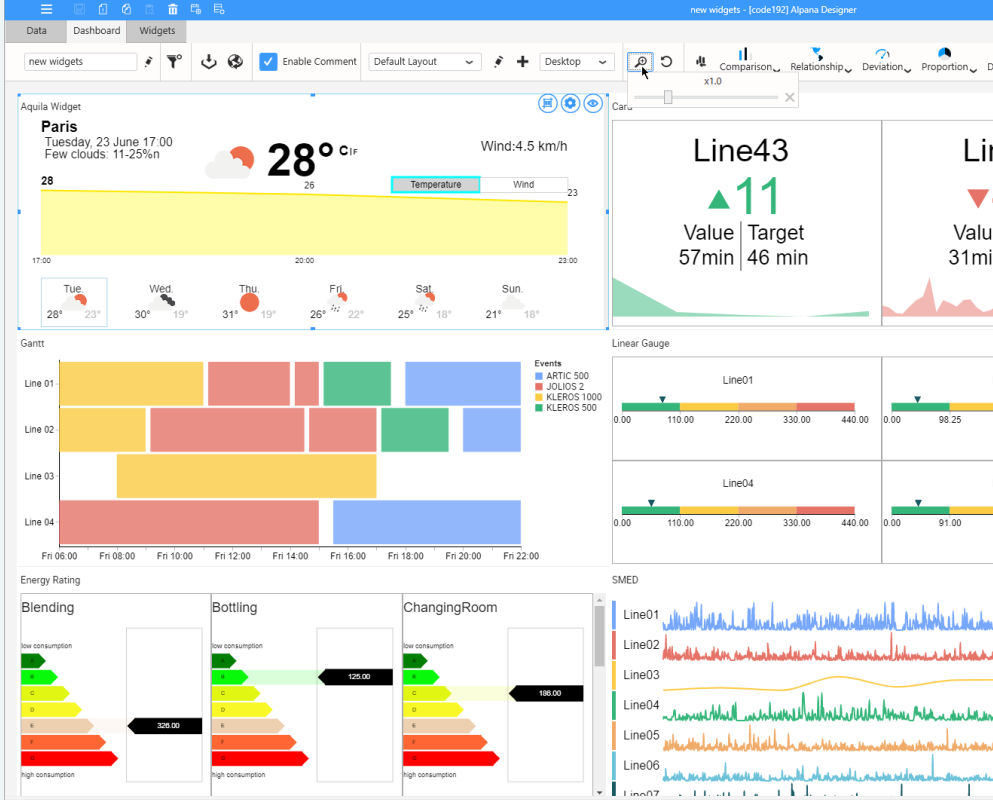
Securely share your Dashboards and Widgets to any modern web browser. Dashboards can be embedded in your Scada Application, your intranet or presented through our secured Server. Automatically send PDF Reports based on Dashboards.

### Meant For Aveva - Schneider Electric

Alpana Platform is an end-to-end solution for creating and sharing interactive industrial Dashboards. It is meant for Aveva - Schneider Electric Software with native connectors to their software portfolio.



The Alpana Designer application lets you connect to data and visualize them as interactive Dashboards using a rich widget library. Alpana Designer then allows you to publish the composed Dashboard to your Alpana Server and share it with your team.



# KEY FEATURES

## Data Connectivity

- Wonderware Intelligence,
- Wonderware Historian,
- **NEW** Wonderware Insight,
- Excel, CSV,
- SQL Server,
- Oracle,
- RESTful web data connector,

## Widgets

- **NEW** [code192] can create your custom Widgets on demand : industrial and scientific plots, 3D, interactivity, animations, ...
- **NEW** Gantt, **NEW** Sparkline, **NEW** Linear Gauge, **NEW** Energy Rating (EPC), **NEW** Banner, **NEW** Treeview,
- Card with **NEW** sparkline option,
- A huge number of Chart types that can be used in any combination and with many options :
  - Step Line, Step Area, Range Area,
  - Line, Area, Stacked Area, 100% Stacked Area, Spline, Spline Area,
  - Column, Range Column, Stacked Column, 100% Stacked Column,
  - Bar, Stacked Bar, 100% Stacked Bar,
  - Hi/Lo, Hi/Lo Open/Close, Candle, Waterfall, Bubble, Scatter,
- Radial Charts : Polar, Radar,
- Proportion Charts with many shapes and options : Semi-Pie, Semi-Doughnut, Pie, Doughnut, Pyramid, Funnel,
- ... and all your favorite widgets from Alpana : Sankey, Grid, Choropleth Map, Bubble Map, Card, Radio Button, Date Picker, Combobox, Checkbox, Range Slider, Range Navigator, PDF Reader, Label, Image.

## NEW Layout Management

- **NEW** Manage multiple Layouts in the same Dashboard.
- **NEW** Re-use your Widgets and Data Sources in PDF reports.
- **NEW** Configure pagination, Headers and Footers for PDF reports.

## System Requirements

### Hardware

- Processor - Dual Core 32-bit CPU (x86)
- Hard Disk - 2 GB (to install and run)
- RAM - 4 GB (minimum)

### Software

- Operating System - Windows 7+, Server 2012+
- Microsoft .Net Framework 4.8
- ASP.NET Core 3.1
- Browser - Chrome, Firefox, Edge (Chromium version), Opera, Safari

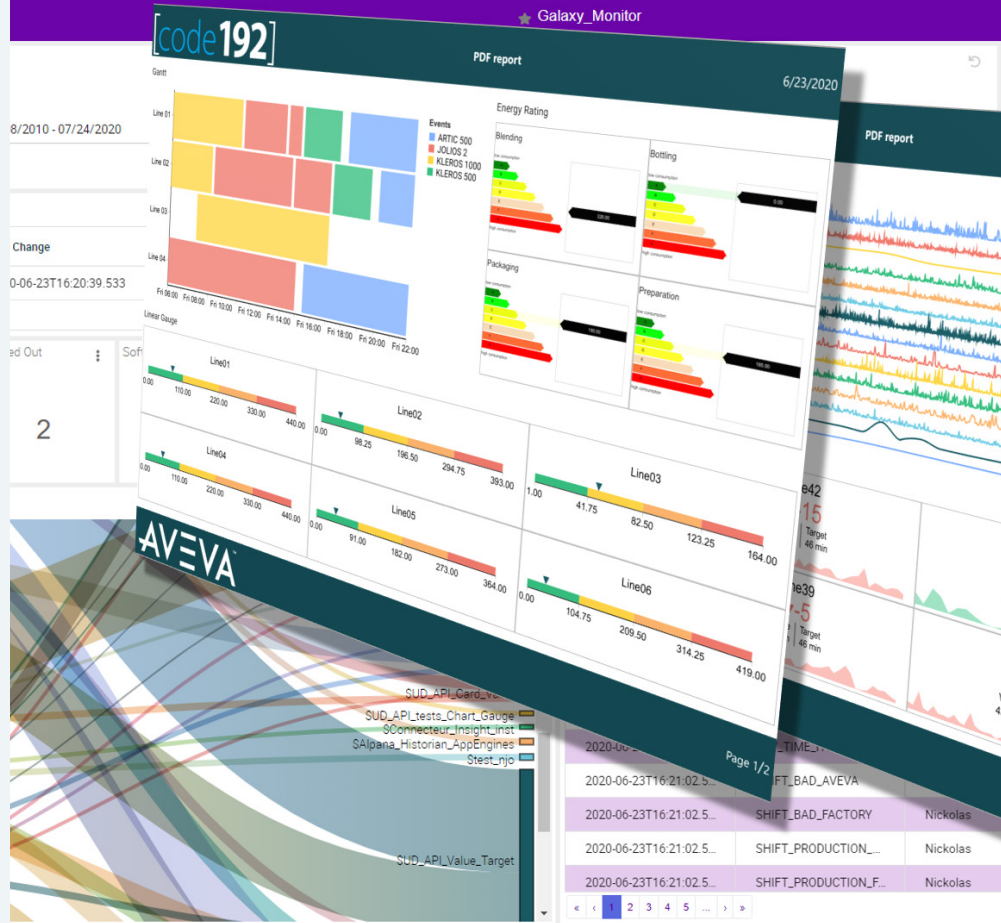
## Licensing

Alpana Designer is licensed in a bundle with Alpana Server.



# ALPANA SERVER

Alpana Server lets you efficiently organize and share Dashboards through a web interface. Installed on premise or in the cloud, Alpana Server can host multiple tenants in complete isolation. Use our web API to talk to Dashboards live. Embed Dashboards within your application either as web pages, or directly within Wonderware Intouch with our native container.



## KEY FEATURES

### Web API

- Send data continuously and let widgets update seamlessly. Example : Connect OPC, Wonderware System Platform and more to Dashboards and get live updates for targeted users.
- Event-based or timer-based Dashboard refresh.
- Perform any action from an external program. Example : trigger exports from outside Alpana and distribute the results.
- Send and receive context to another application. Example : navigate in context with InTouch OMI.

### Multi-tenancy

Manage multiple isolated instances from a single installation. Save on maintenance and deployment costs with multi-customer installations.

### Easy administration

- All items stored in Alpana Server are versioned.
- All changes are logged.
- All items have complete permissions management
- Users can optionally connect with LDAP, ADFS, Facebook, OpenID, Google, or Microsoft security.

### Designer integration

Seamlessly design and publish Dashboards from within the designer application.

### NEW Data Entry

Create forms with input validation, and replace your Excel workflows with a central and secured solution.

### Scheduling / Alerts

Dashboards can be manually exported to PDF reports with **NEW** pagination and **NEW** header/footer, or automatically emailed according to a flexible schedule or on complex data change conditions. Excel and image exports are also supported.

### And much more ...

RPGD support, CORS whitelisting, chat and comments, WorldClass support, training and documentation, Android/iOS mobile app, Intouch OMI app ....

### System requirements

#### Hardware

- Processor - good server CPU recommended
- Hard Disk - SSD with 50GB+ free always
- RAM - 4 GB (minimum)

#### Software

- Operating System - Server 2012+
- Microsoft .Net Framework 4.8
- ASP.NET Core 3.1